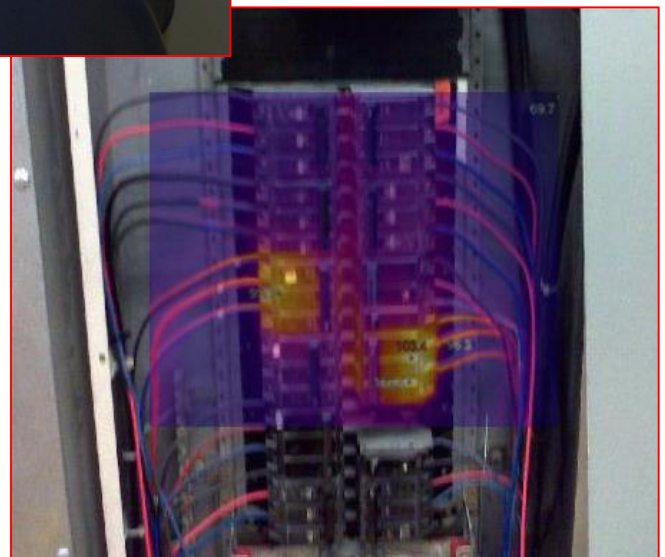
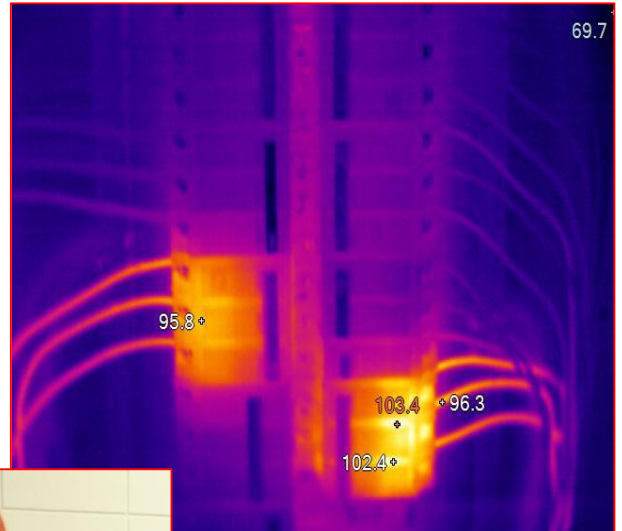




McWilliams Electric Co., Inc.
Infrared Electrical Scan Division



SAMPLE

123 Main St.
Chicago, Illinois 60606
Infrared Electrical Inspection Report
Prepared by McWilliams Electric

Table Of Contents

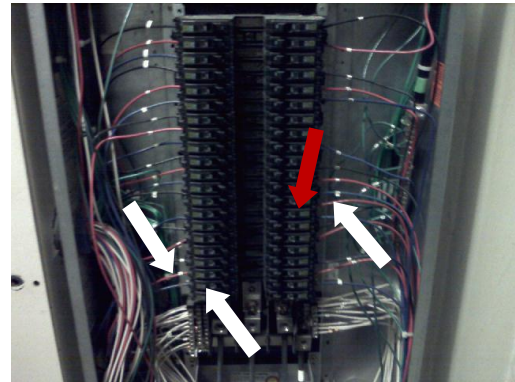
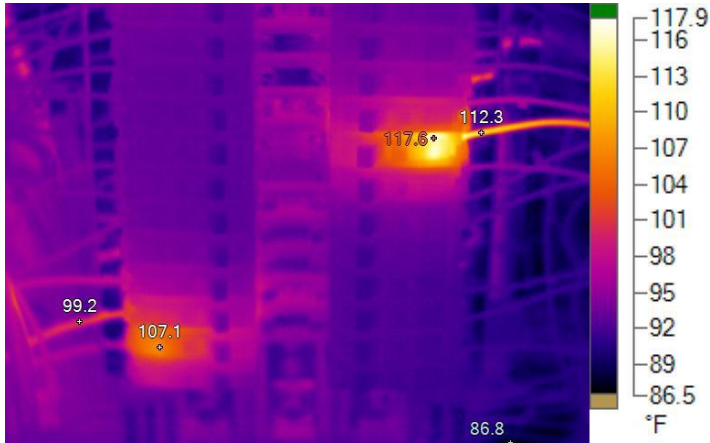
| | |
|--|---|
| 425 - Panel RP-2A - Bottom.IS2 | 3 |
| 428 - Panel RP-1 - Breakers.IS2 | 4 |
| 433 - Panel RP-NE - Top.IS2 | 5 |
| 453 - 100A Switch - AHU-1.IS2 | 6 |
| 469 - AUH-13.IS2 | 7 |
| 507 - Panel EQP-9A Breakers 1,3,5 and 7,9,11.IS2 | 8 |
| 508 - Panel EQP-4 - Breaker 31,33,35.IS2 | 9 |



Inspected By: **Technician**

McWilliams Electric Co., Inc.

| | | | |
|-------------------|-----------------------|------------------------|-------------------|
| Inspection Date: | 12/28/2011 9:37:15 AM | Location | Front Office Area |
| Ambient Air Temp: | 75.0°F | Reflected Temperature: | 75.0°F |
| Emissivity: | 0.65 | | |



Visible Light Image

425 - Panel RP-2A - Bottom.IS2

| Information on Problem | | |
|---------------------------|------------------|------------------------|
| Difference in Temperature | Importance Level | Repair Schedule |
| 30.8°F | Minor | When Convenient |

| Cause & Recommendation | |
|---|--|
| Possible Causes | Recommended Action |
| Overloaded breaker/Loose or dirty connection | Check breaker load. Clean and tighten connection. |

Image Info

| | |
|---------------------|-----------------------|
| Average Temperature | 93.5°F |
| Image Range | 86.8°F to 117.6°F |
| Image Time | 12/28/2011 9:37:15 AM |
| File Location | |

Main Image Markers

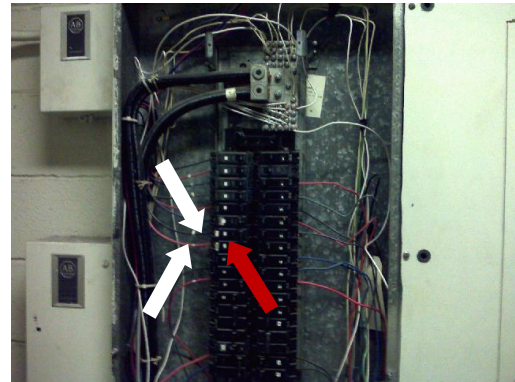
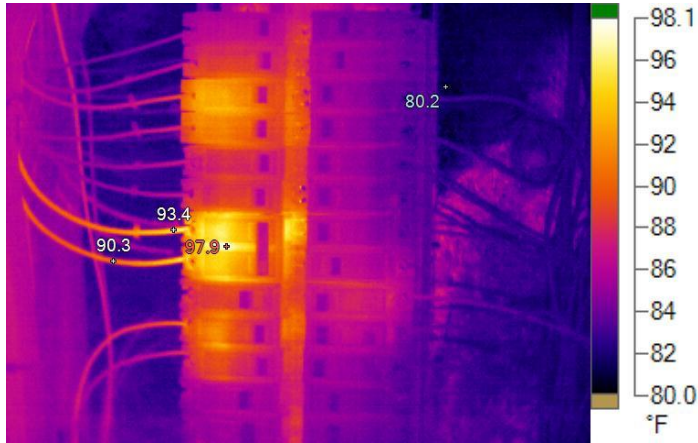
| Name | Temperature | Emissivity |
|------|-------------|------------|
| Hot | 117.6°F | 0.65 |
| Cold | 86.8°F | 0.65 |
| P0 | 107.1°F | 0.65 |
| P1 | 99.2°F | 0.65 |
| P2 | 112.3°F | 0.65 |



Inspected By: **Technician**

McWilliams Electric Co., Inc.

| | | | |
|-------------------|-----------------------|------------------------|-------------------|
| Inspection Date: | 12/28/2011 9:44:33 AM | Location | Front Office Area |
| Ambient Air Temp: | 75.0°F | Reflected Temperature: | 75.0°F |
| Emissivity: | 0.65 | | |



Visible Light Image

428 - Panel RP-1 - Breakers.IS2

| Information on Problem | | |
|-------------------------------|------------------|------------------------|
| Difference in Temperature | Importance Level | Repair Schedule |
| 17.7°F | Minor | When Convenient |

| Cause & Recommendation | |
|---|--|
| Possible Causes | Recommended Action |
| Overloaded breaker/Loose or dirty connection | Check breaker load. Clean and tighten connections |

Image Info

| | |
|---------------------|-----------------------|
| Average Temperature | 84.9°F |
| Image Range | 80.2°F to 97.9°F |
| Image Time | 12/28/2011 9:44:33 AM |
| File Location | |

Main Image Markers

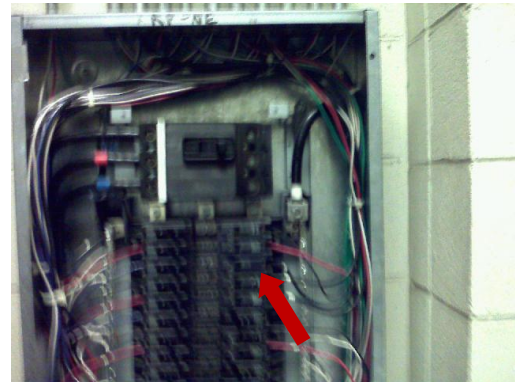
| Name | Temperature | Emissivity |
|------|-------------|------------|
| Hot | 97.9°F | 0.65 |
| Cold | 80.2°F | 0.65 |
| P0 | 93.4°F | 0.65 |
| P1 | 90.3°F | 0.65 |



Inspected By: **Technician**

McWilliams Electric Co., Inc.

| | | | |
|-------------------|------------------------|------------------------|-------------------|
| Inspection Date: | 12/28/2011 10:23:50 AM | Location | Front Office Area |
| Ambient Air Temp: | 75.0°F | Reflected Temperature: | 75.0°F |
| Emissivity: | 0.65 | | |



Visible Light Image

433 - Panel RP-NE - Top.IS2

Information on Problem

| | | |
|---------------------------|------------------|------------------------|
| Difference in Temperature | Importance Level | Repair Schedule |
| 46.9°F | Minor | When Convenient |

Cause & Recommendation

| | |
|---|--|
| Possible Causes | Recommended Action |
| Overloaded breaker/Loose or dirty connection | Check breaker load. Clean and tighten connections |

Image Info

| | |
|---------------------|------------------------|
| Average Temperature | 90.8°F |
| Image Range | 80.4°F to 127.3°F |
| Image Time | 12/28/2011 10:23:50 AM |
| File Location | |

Main Image Markers

| Name | Temperature | Emissivity |
|------|-------------|------------|
| Hot | 127.3°F | 0.65 |
| Cold | 80.4°F | 0.65 |
| P0 | 120.0°F | 0.65 |
| P1 | 118.7°F | 0.65 |
| P2 | 116.6°F | 0.65 |
| P3 | 117.7°F | 0.65 |

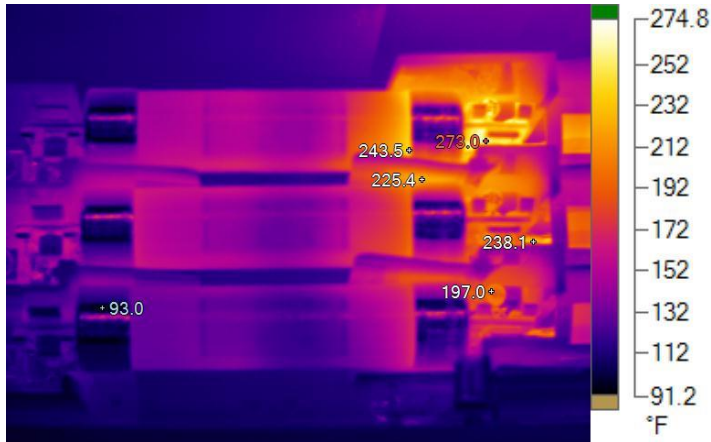
| Name | Temperature | Emissivity |
|------|-------------|------------|
| P4 | 112.7°F | 0.65 |
| P5 | 115.8°F | 0.65 |
| P6 | 120.6°F | 0.65 |
| P7 | 117.0°F | 0.65 |
| P8 | 122.9°F | 0.65 |



Inspected By: **Technician**

McWilliams Electric Co., Inc.

| | | | |
|-------------------|-----------------------|------------------------|-------------------------------|
| Inspection Date: | 12/29/2011 8:33:00 AM | Location | South/North Print/Copy Center |
| Ambient Air Temp: | 75.0°F | Reflected Temperature: | 75.0°F |
| Emissivity: | 0.65 | | |



Visible Light Image

453 - 100A Switch - AHU-1.IS2

| Information on Problem | | |
|---------------------------|------------------|---------------------------|
| Difference in Temperature | Importance Level | Repair Schedule |
| 180.0°F | Major | REPAIR IMMEDIATELY |

| Cause & Recommendation | |
|-----------------------------------|--|
| Possible Causes | Recommended Action |
| Loose or dirty connections | Remove & clean fuses. Tighten connections |

Image Info

| | |
|---------------------|-----------------------|
| Average Temperature | 136.5°F |
| Image Range | 93.0°F to 273.0°F |
| Image Time | 12/29/2011 8:33:00 AM |
| File Location | |

Main Image Markers

| Name | Temperature | Emissivity |
|------|-------------|------------|
| Hot | 273.0°F | 0.65 |
| Cold | 93.0°F | 0.65 |
| P0 | 243.5°F | 0.65 |
| P1 | 225.4°F | 0.65 |
| P2 | 197.0°F | 0.65 |
| P3 | 238.1°F | 0.65 |



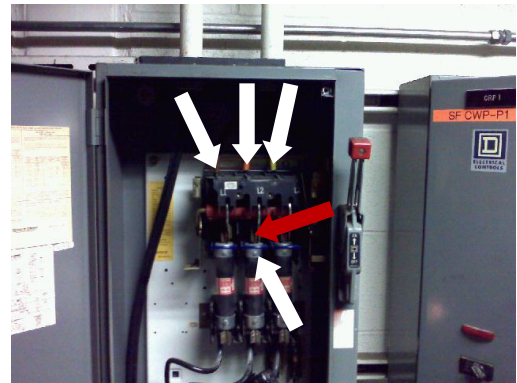
Inspected By: **Technician**

McWilliams Electric Co., Inc.

| | | | |
|-------------------|-----------------------|------------------------|-------------------------------|
| Inspection Date: | 12/29/2011 8:46:25 AM | Location | South/North Print/Copy Center |
| Ambient Air Temp: | 75.0°F | Reflected Temperature: | 75.0°F |
| Emissivity: | 0.65 | | |



469 - AUH-13.IS2



Visible Light Image

| Information on Problem | | |
|---------------------------|------------------|---------------------------|
| Difference in Temperature | Importance Level | Repair Schedule |
| 96.3°F | Major | REPAIR IMMEDIATELY |

| Cause & Recommendation | |
|---|--|
| Possible Causes | Recommended Action |
| Overloaded fuses/ Loose or dirty connections | Check load. Remove and clean fuses & reinstall. Tighten all connections |

Image Info

| | |
|---------------------|-----------------------|
| Average Temperature | 103.3°F |
| Image Range | 73.9°F to 170.2°F |
| Image Time | 12/29/2011 8:46:25 AM |
| File Location | |

Main Image Markers

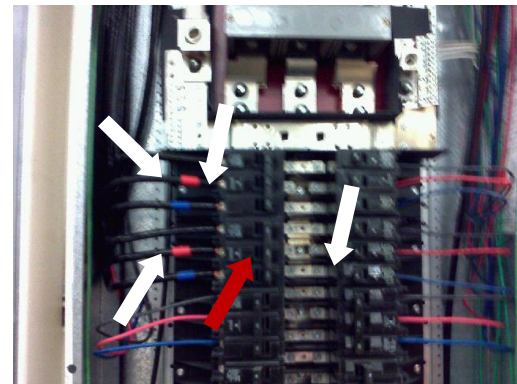
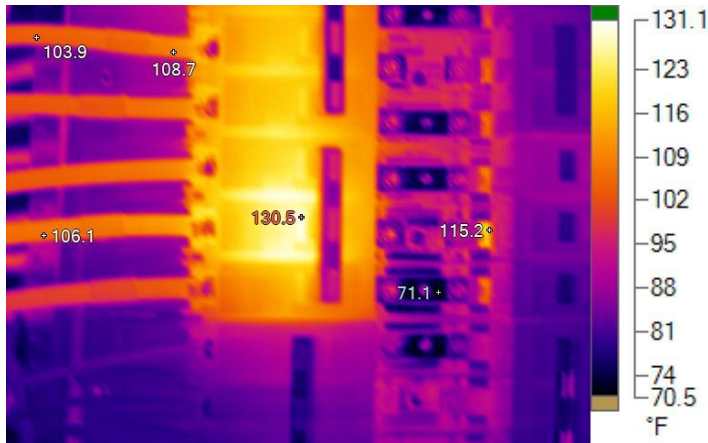
| Name | Temperature | Emissivity |
|------|-------------|------------|
| Hot | 170.2°F | 0.65 |
| Cold | 73.9°F | 0.65 |
| P0 | 148.0°F | 0.65 |
| P1 | 120.0°F | 0.65 |
| P2 | 124.4°F | 0.65 |
| P3 | 150.4°F | 0.65 |



Inspected By: **Technician**

McWilliams Electric Co., Inc.

| | | | |
|-------------------|-----------------------|------------------------|-----------|
| Inspection Date: | 12/29/2011 1:33:31 PM | Location | OPC South |
| Ambient Air Temp: | 75.0°F | Reflected Temperature: | 75.0°F |
| Emissivity: | 0.65 | | |



Visible Light Image

507 - Panel EQP-9A Breakers 1,3,5 and 7,9,11.IS2

| Information on Problem | | |
|---------------------------|------------------|------------------------|
| Difference in Temperature | Importance Level | Repair Schedule |
| 59.4°F | Minor | When Convenient |

| Cause & Recommendation | |
|---|---|
| Possible Causes | Recommended Action |
| Overloaded breaker/Loose or dirty connection | Check load. Clean and tighten connections. |

Image Info

| | |
|---------------------|-----------------------|
| Average Temperature | 93.1°F |
| Image Range | 71.1°F to 130.5°F |
| Image Time | 12/29/2011 1:33:31 PM |
| File Location | |

Main Image Markers

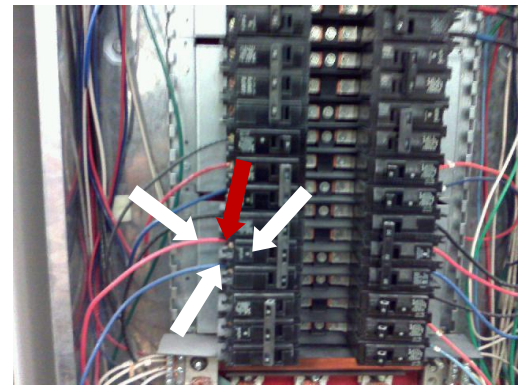
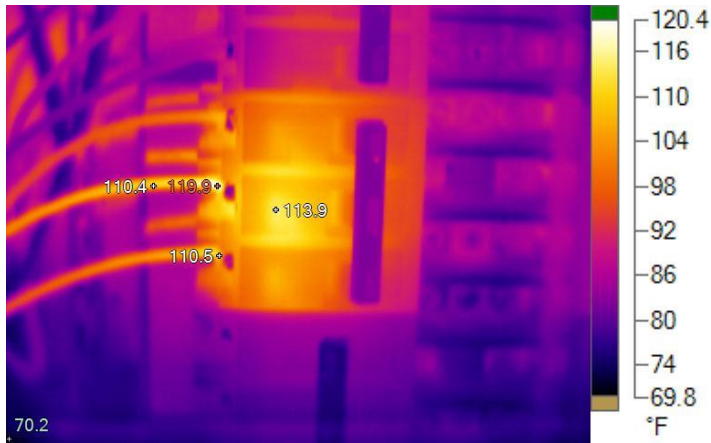
| Name | Temperature | Emissivity |
|------|-------------|------------|
| Hot | 130.5°F | 0.65 |
| Cold | 71.1°F | 0.65 |
| P0 | 108.7°F | 0.65 |
| P1 | 103.9°F | 0.65 |
| P2 | 106.1°F | 0.65 |
| P3 | 115.2°F | 0.65 |



Inspected By: **Technician**

McWilliams Electric Co., Inc.

| | | | |
|-------------------|-----------------------|------------------------|-----------|
| Inspection Date: | 12/29/2011 1:50:15 PM | Location | OPC North |
| Ambient Air Temp: | 75.0°F | Reflected Temperature: | 75.0°F |
| Emissivity: | 0.65 | | |



Visible Light Image

508 - Panel EQP-4 - Breaker 31,33,35.IS2

| Information on Problem | | |
|---------------------------|------------------|------------------------|
| Difference in Temperature | Importance Level | Repair Schedule |
| 49.7°F | Minor | When Convenient |

| Cause & Recommendation | |
|---|---|
| Possible Causes | Recommended Action |
| Overloaded breaker/Loose or dirty connection | Check load. Clean and tighten connections. |

Image Info

| | |
|---------------------|-----------------------|
| Average Temperature | 86.2°F |
| Image Range | 70.2°F to 119.9°F |
| Image Time | 12/29/2011 1:50:15 PM |
| File Location | |

Main Image Markers

| Name | Temperature | Emissivity |
|------|-------------|------------|
| Hot | 119.9°F | 0.65 |
| Cold | 70.2°F | 0.65 |
| P0 | 110.4°F | 0.65 |
| P1 | 110.5°F | 0.65 |
| P2 | 113.9°F | 0.65 |